

# PRODUCT OVERVIEW



- OUR EXPERTISE ENSURES ON-TIME DELIVERY



## PRODUCTS

### » PIPES & TUBES

Hydra Pipe has a large stock of pipe & tube products that covers the high performance range needed for piping system applications.

Our standard range is cold drawn seamless tubes & pipes (this ensures best the precision of dimension, shape and cleanliness)

#### Seamless Stainless Steel

ASTM A269 / A213 – Grade AISI 316L ASTM A312 / A530 – Grade TP 316L

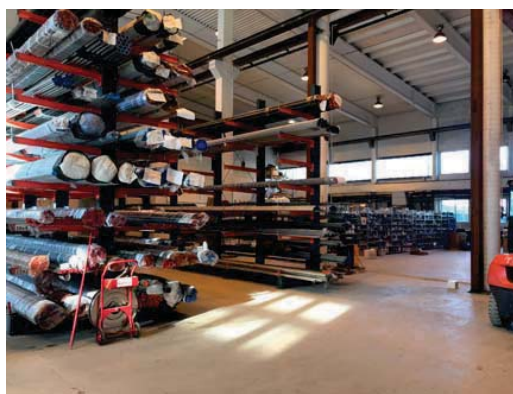
**Size range: MM 6 x 1.0 - 80 x 10.0**  
**SCH from ½" – 10"**

#### Seamless Carbon Steel

E235N (St 37.4 NBK) to DIN 2391C (EN10305-4)  
E355N (St 52.4 NBK) to DIN 2391C (EN10305-4)

**Size range: MM 6 x 1.0 - 250 x 25.0**  
**SCH from ½" – 10"**

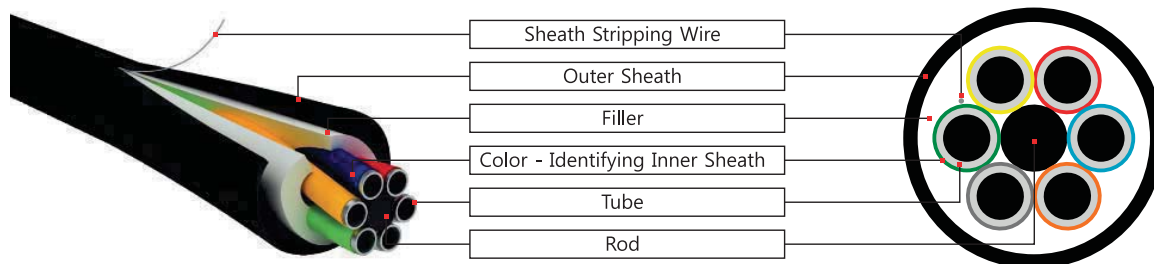
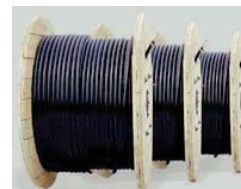
**Note!** Other materials such as duplex, super duplex, 6MO on request.



### » MULTI CORE TUBE

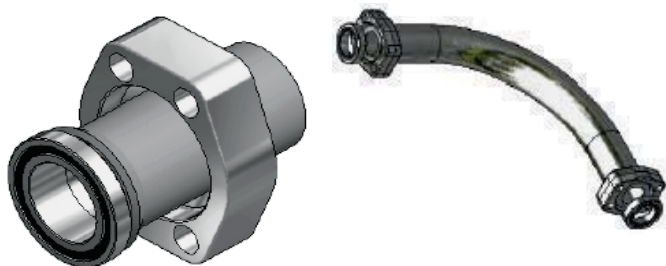
Hydra Pipe's multicore tubes for pneumatic and hydraulic remote control, measuring or monitoring.

We also supply the necessary tools and accessories such as heat shrinkable products, fittings, tube cutter, support, bending tools ++



## PRODUCTS

### » FLARE FLANGE CONNECTION



» 1/2" through 8"

» Schedule 40, 80 and 160

» Pressure up to 485 bar 6900 PSI

» Metric from 20mm to 190mm

Carbon and stainless steel

### » RETAIN RING FLANGE CONNECTION



» 1.1/2" through 10"

» Schedule 160 and XXS

» Pressure up to 420bar 6000 PSI

» Metric: 56-66-80-97-115-130-150-190-220-250

Carbon and stainless steel

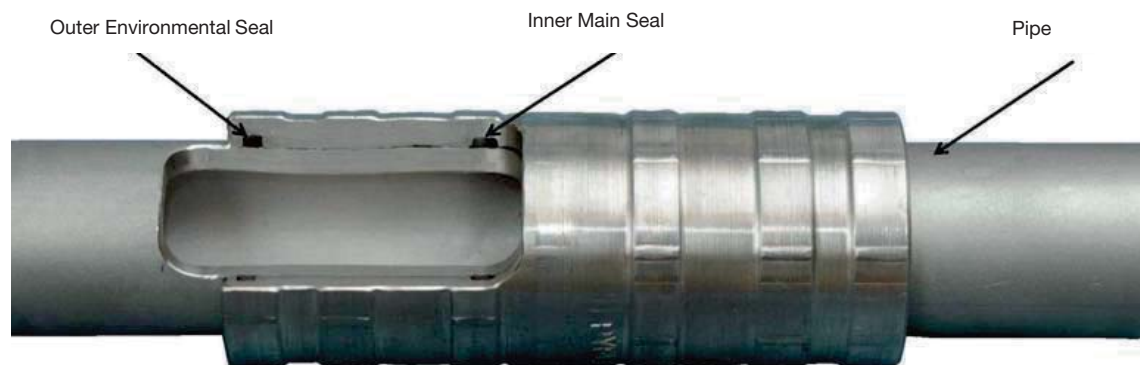
## PYPLOK®

### THE WELDLESS, THREADLESS WAY TO JOIN PIPE OR TUBE

PYPLOK® Fittings is available in carbon steel, stainless steel, copper-nickel, duplex, super duplex. Sizes 1/4" – 4" (6-115mm). Pressure rating: up to 9300 PSI, 640 bar.

Approved by: DNV, ABS, CRN.

Temperature: -26°C to +205°C, with EPDM seal for steam -50°C to +260°C






## PYPLOK®

THE WELDLESS, THREADLESS WAY TO JOIN PIPE OR TUBE

### Fitting Configuration Guide

					
<b>Coupling</b>	<b>Coupling with Inner Stop</b>	<b>90° Elbow</b>	<b>45° Elbow</b>	<b>Tee</b>	<b>Reducing Tee</b>
					
<b>Reducer</b>	<b>End Cap</b>	<b>Flange - ANSI 150-300#</b>	<b>SAE -ISO Flange Body</b>	<b>SAE 3000-6000 ISO6164</b>	<b>90° PYPLOK® x Flange</b>
					
<b>Compact Elbow Flange</b>	<b>JIC 37° Male</b>	<b>JIC 37° Female Swivel</b>	<b>NPT Male</b>	<b>NPT Female</b>	<b>BSPP Male</b>
					
<b>BSPP Female</b>	<b>DIN 24° Male</b>	<b>DIN 24° Female Swivel</b>	<b>Weldable Bulkhead</b>	<b>BSPP Female Branch Tee</b>	<b>BSPP Cross Fitting with 4 Ports</b>

Several configuration available, ask for complete catalogue



## PYPLOK®

THE WELDLESS, THREADLESS WAY TO JOIN PIPE OR TUBE

### Industries and Applications

**PYPLOK® has been used in numerous industries worldwide including but not limited to:**

- Ship Building and Repair (Commercial and Navy)
- Refinery, Chemical, Pharmaceuticals, Food/Beverage
- Marine, Offshore and Sub Sea
- Land Based Drilling Rigs, Mobile Equipment
- Sugar, Steel/Metal Production, Testing Equipment, Fire Suppression
- Mining, Pulp and Paper, Nuclear/Power Generation, Automotive

### PYPLOK® Applications Include:

- CNG – Compressed Natural Gas
- CO2 Cofferdam Inerting
- Condensate Piping
- Deluge Systems
- Down Well Coiled Tubing
- Drains and Plumbing Vent
- Ethylene Glycol/Water
- Fuel and Fuel Heating Lines
- Heating Coils
- Utility Piping Systems
- High Pressure Fire Suppression Systems
- Mobile Equipment Tubing/Piping
- High Pressure Hydraulics Systems
- Low Temperature Steam (<200°C)
- LPG – Liquefied Petroleum Gas
- Lubrication & Grease
- Natural Gas Distribution
- Plant, Instrumentation and Utility Air
- Waste Systems
- Solvents and Water Based Paints
- Subsea/BOP Piping
- Steam Tracer Lines
- Waste Water
- Paint, Brake Fluid and Sealer Lines



## PRODUCTS

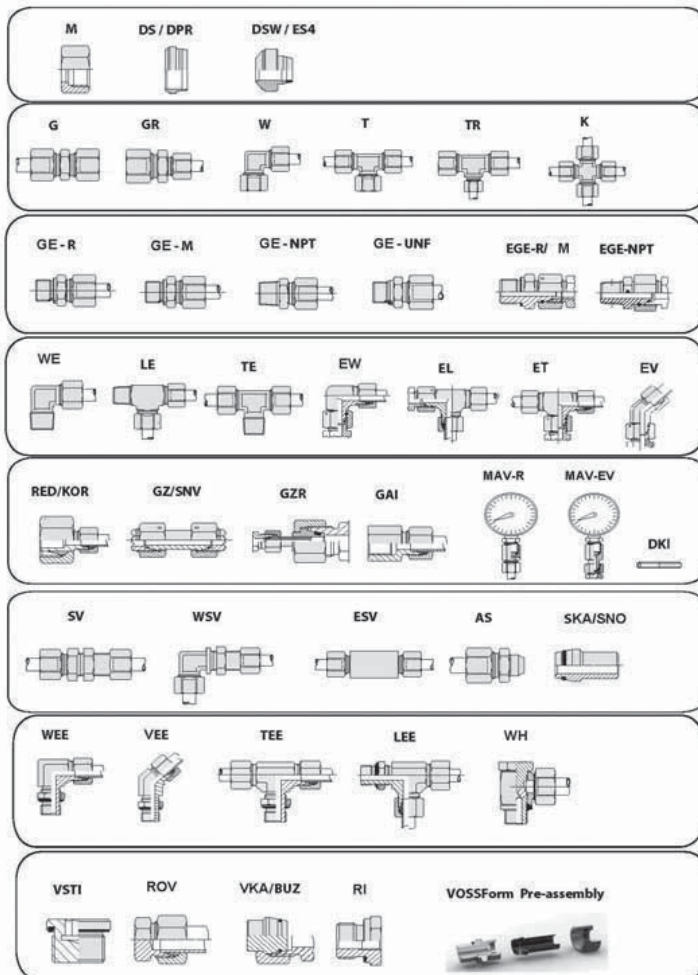
### » BITE TYPE FITTINGS

Bite type fittings according to DIN 2353 / ISO8434-1

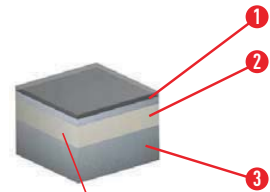
**Zinc-Nickel coated carbon steel and 316 stainless steel on stock.**

VossForm tube forming technology for leak-free applications.

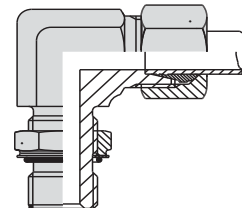
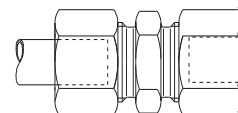
#### RANGE - OVERVIEW



ALL CARBON STEEL FITTINGS STANDARD WITH ZINC NICKEL COATING  
COMPLETE RANGE OF STAINLESS STEEL ON STOCK



- 1 Chemical sealing
- 2 Cr III passivation
- 3 Zinc Nickel



**VOSS**

**Gates EMB**

## PRODUCTS

### » HYDRAULIC HOSE AND COUPLINGS

Hydra Pipe offers a large selection of hydraulic hoses and couplings with BSP, NPT, JIC, DKO DIN, Japanese, SAE 3000/6000 Flange connections ++ in both carbon and stainless steel.

Hydra Pipe uses high quality suppliers to make sure that the quality of the products meets the highest industry requirements. Hoses meets the well-known industry standards and has the necessary type approvals from all major classification societies like DNV-GL, ABS ++



#### DISTRIBUTOR CERTIFICATE

#### WE HEREBY CERTIFY THAT

Hydra Pipe A/S

**IS RECOGNISED AS AUTHORISED  
DISTRIBUTOR FOR GATES**

*Paul Kerfoot*  
Paul Kerfoot

Hydra Pipe is a member of the Gates Industrial Europe Ltd.



### Working Pressures (Bar)

Hose type	Dimensions										
	3/16"	1/4"	5/16"	3/8"	1/2"	5/8"	3/4"	1"	1 1/4"	1 1/2"	2"
PL	150	150	120	100	100		100	75			
G1 / 1SN		225	215	180	160	130	105	88	63	50	40
SK117		290	250	230	210	130	105	88			
SK142		345	295	275	240						
M3K		225	225	225	225	225	225	225			
M4K		280	280	280	280	280	280				
M5K		350	350	350	350						
M6K		420									
G2 / 2SN		400	350	330	275	250	215	165	125	90	80
MXT /Pro2T/2SC		400	350	330	275	250	215	165			
M2T		420	380	350	297	262	240	172			
SK216		450	420	385	345	290	280	230	175		
4SP		500		460	425	400	380	320	210	185	175
4SH							420	385	350	300	250
G3K									210	210	210
G4K							280	280	280		
G5K/ R13					350	350	350	350	350	350	350
G6K/ R15				420	420	420	420	420	420	420	420
VHP		700		700							
6SWH	2800	2800	2500		2000						
T9* (PTFE)		*224		*183	*161		*103	*80			
R7		190		155	140	105	87	70			
R8		350		280	245	195	162	142			

Mininum burst pressure is standard 4 x working pressure, except those marked \* which are 3 x working pressure





## PRODUCTS

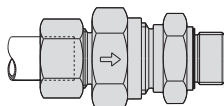
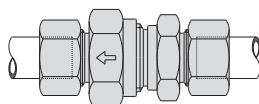
### » PIPE-TUBE CLAMPS

Hydra Pipe's Pipe clamps are made according to DIN 3015 and designed to support sizes up to 14" (356 mm OD). Clamps are available in a wide range of thermoplastic materials, including special compounds for high temperature and fire safety, also available in rubber and aluminium. Metal parts are available in carbon and stainless steel. Special solutions for noise and vibration reduction are also available. U-Bolt (saddle), metal pipe clamps also available in mild steel and stainless steel.



### » VALVES

High and low pressure ball - needle - check (non-return) valves manufactured according to the highest standards. 2 or 3-way ball valves available from DN6 (1/4") up to DN 150 (6") with threaded or flanged connections. Ball valves and check valves with threads, flange adapters or way-fare (direct flange) connections. Pneumatic and electric actuators on request. Materials brass, carbon and stainless steel with seals to fit different needs of chemical resistance and environment.



## » ADAPTORS

Complete range of adaptors in carbon and stainless steel material.

Threads and connections types: **BSP-NPT-JIC(SAE J514)-ORFS-MM-UNF.**

Size range: **BSP/NPT= 1/8" - 2" , JIC= 7/16"-20 - 2.1/2"-12 , ORFS= 9/16-18 -2-12 MM= 10x1.0 - 38x1.5**

Special parts and sizes available on request



## » LOW PRESSURE HOSES & COUPLINGS

Hydra Pipe offers a large selection of industrial hoses and couplings for the following applications: Multi-purpose - Cleaning and Wash Down - Steam - Food - Material Handling - Water - Air & Gas - Oil - Chemicals.

Hydra Pipe uses high quality suppliers to make sure that the quality of the products meets the highest industry requirements.



## PRODUCTS

### » QUICK-DISCONNECT COUPLINGS - ROTARY COUPLINGS

Hydra Pipe supplies a wide range of Quick Disconnect Couplings and Rotary Couplings for hydraulic-water-air applications

**Cejn, Holmbury, Stucchi, Intertraco, Faster,** and others brands.

With or without valve and pressure eliminator.

Available in both Zinc-Nickel coated carbon steel and stainless steel



Flat Face Couplings



### » TEST POINTS-HOSES-GAUGES

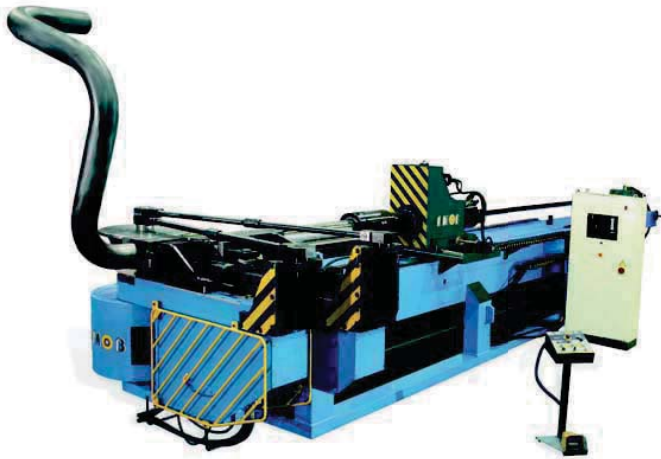
Hydra Pipe offers a wide range of test points, hoses, gauges ++ in both Zinc-Nickel carbon steel and stainless steel material. All in according to international well known standards.





## PRODUCTS

### » BENDING-CUTTING PIPE PREFABRICATION MACHINES



**AMOB**  
MÁQUINAS FERRAMENTAS, S.A.



**MACKMA**  
MASSAROGROUP®



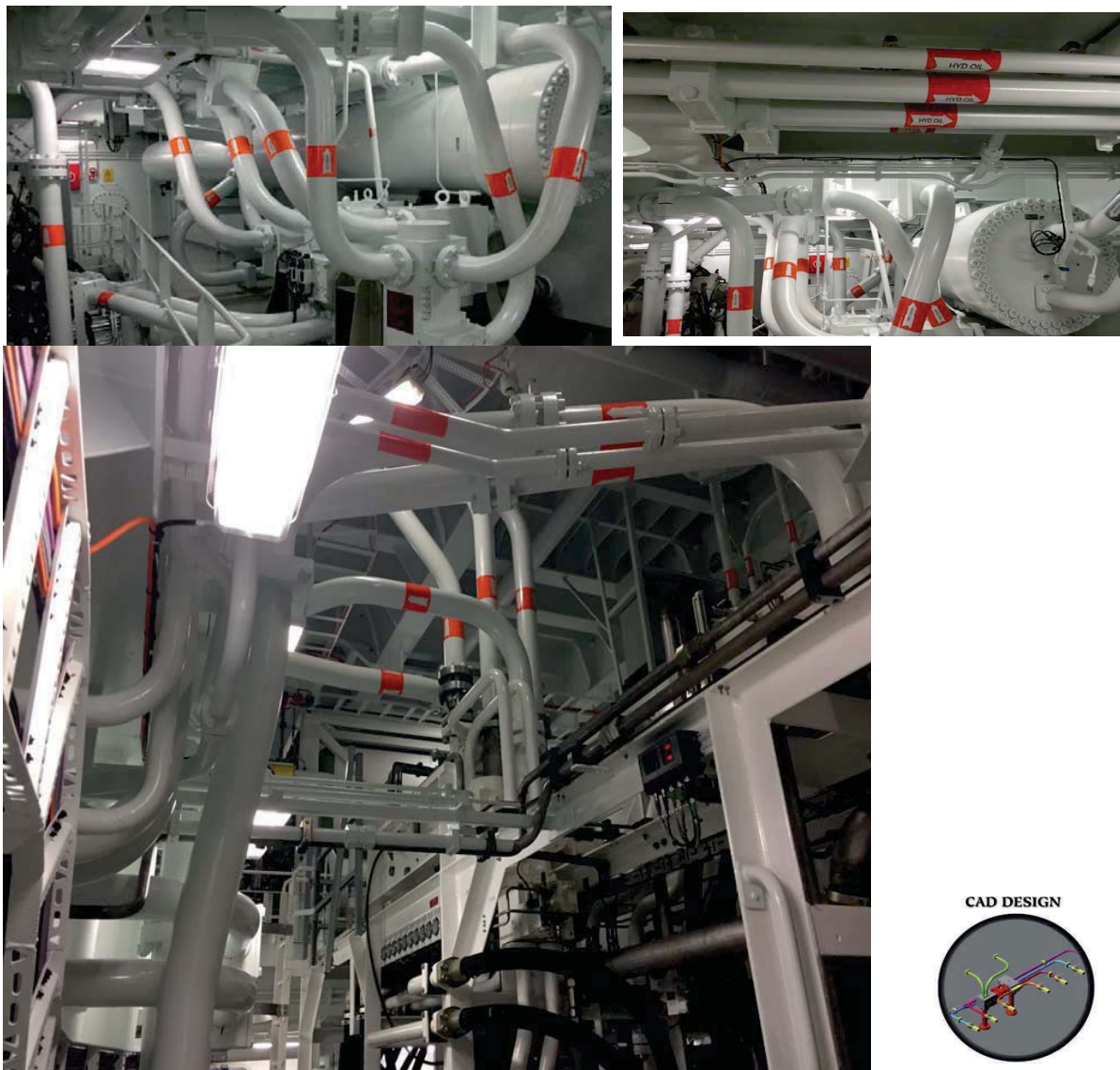
### » HOSE ASSEMBLY MACHINES & EQUIPMENT



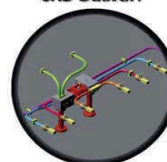
## PRODUCTS

### » PREFABRICATED PIPING SPOOLS

Hydra Pipe supplies prefabricated high pressure (350bar) piping spools up to size 190 x 20mm complete with flange end connections, flushed and tested acc. to customers requirements. We also supplies custom made special piping spools up to 16" for all kind of applications also material handling



CAD DESIGN





## Some reference projects of piping and hose installations

### Complete turn-key package of PYPLOK piping and hose assemblies on Seawalk in Geirangerfjord



### Complete turn-key package of PYPLOK & flanged piping at Rolls Royce test facilities in Brattvaag



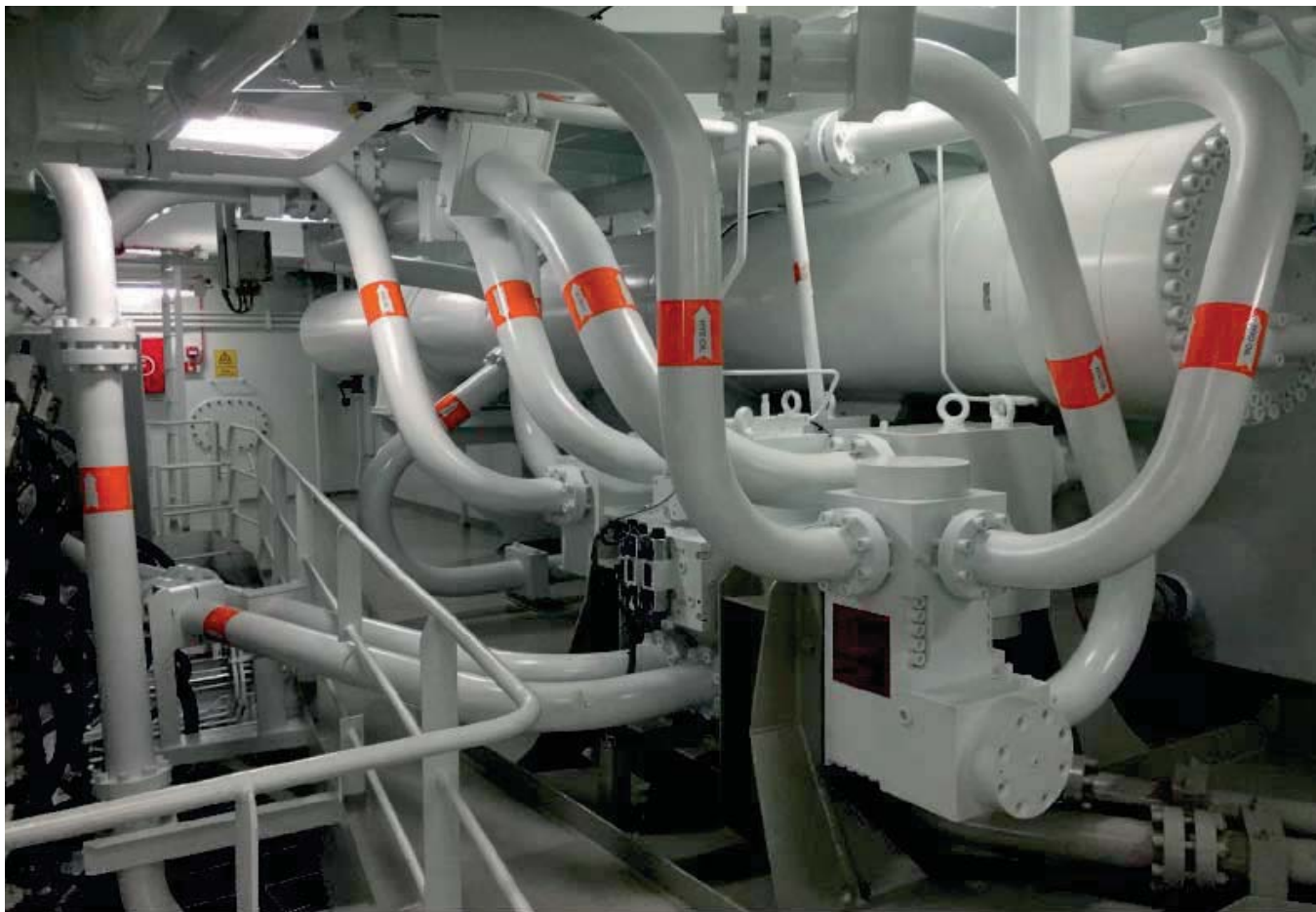
### Complete turn-key package of PYPLOK piping and hose assemblies at Småpudden Bridge in Bergen





## Some reference projects of piping and hose installations

Prefabricated piping project up 190x20mm included bending, grooving, flushing and pressure testing on EDDA FREYA vessel at Kleven Yard.



## FAST DELIVERIES AND APPROPRIATE FEEDBACK

With several decades of combined experience in the Norwegian market Hydra Pipe believes that they have the foundation to provide the very best solutions for our customers. Hydra Pipe's main focus is to be the preferred supplier within our product range regardless the type of business.

Our main market is maritime and offshore industry, but we do service several customers hydroelectric energy, transport, agriculture, process and other general industries that need our products and knowledge. Our main activity is parts and equipment for fluid conveyance (piping-systems-hoses++) for hydraulic, water, gas ++.

We emphasize that we shall be there for the customer with fast deliveries and appropriate feedback. Hydra Pipe always seeks to offer new technical solutions that provide significantly faster installation times and lower overall costs.

Hydra Pipe offer products from leading manufacturers worldwide.



## Book our new catalog today!

The catalog contains over 500 pages of quality products for an easier and safer working day!





- OUR EXPERTISE ENSURES ON-TIME DELIVERY



Design: www.osberget.no

## HEAD OFFICE

### ÅLESUND

Hydra Pipe AS  
Sjukenesstranda 41  
6037 Eidsnes (Aalesund)  
NORWAY +47 70 17 72 00



### LILLESTRØM

Lahugmoveien 81  
2013 Skjetten  
NORWAY  
+47 21 65 64 50



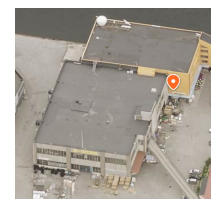
### TRONDHEIM

Industriveien 39 C  
N-7080 Heimdal  
NORWAY  
+47 73 48 79 60



### BERGEN

Vågsgaten 22  
5161 Laksevåg  
NORWAY  
+47 47 406 70 007 - 907 85 349



### DENMARK

Hydra Pipe Danmark AS  
+45 41 111 7125

